

Author's Proof

Carefully read the entire proof and mark all corrections in the appropriate place, using the **Adobe Reader editing tools** ([Adobe Help](#)), alternatively provide them in the Discussion Forum indicating the line number of the proof. Do not forget to reply to the queries.

We do not accept corrections in the form of edited manuscripts.

In order to ensure the timely publication of your article, please submit the corrections within 48 hours.

If you have any questions, please contact science.production.office@frontiersin.org.

Author Queries Form

Query No.	Details required	Author's Response
Q1	Confirm that the first name and surname of all the authors have been identified correctly in the front page and citation text.	
Q2	Please provide complete postal address for the corresponding author.	
Q3	Verify that all the equations and special characters are displayed correctly.	
Q4	Ensure that all the figures, tables and captions are correct.	
Q5	If you decide to use previously published, copyrighted figures in your article, please keep in mind that it is your responsibility as author to obtain the appropriate permissions and licences and to follow any citation instructions requested by third-party rights holders. If obtaining the reproduction rights involves the payment of a fee, these charges are to be paid by the authors.	
Q6	Please include "Levitt, 1971" and "Peelle et al., 2011" in the reference list.	
Q7	Figures are not cited in the sequential order inside the text. Please advice.	
Q8	Please provide the meaning of "***" and "****" in "Figure 2" caption.	
Q9	Please provide page range and volume number for "Drullman et al., 2005."	
Q10	We have changed "Wöstmann et al., 2014" to "Wöstmann et al., 2015" in the reference list as well as inside the text. Kindly confirm if this is fine.	
Q11	Please confirm if the text included as "Conflict of Interest Statement" is fine.	



Hearing loss impacts neural alpha oscillations under adverse listening conditions

Eline B. Petersen^{1,2,3}*, Malte Wöstmann^{4,5}, Jonas Obleser⁵, Stefan Stenfelt^{2,3} and Thomas Lunner^{1,3}

¹ Eriksholm Research Centre, Snekkersten, Denmark

² Technical Audiology, Department of Clinical and Experimental Medicine, Linköping University, Linköping, Sweden

³ Linnaeus Centre HEAD, Swedish Institute for Disability Research, Linköping University, Linköping, Sweden

⁴ International Max Planck Research School on Neuroscience of Communication, Leipzig, Germany

⁵ Max Planck Research Group "Auditory Cognition," Max Planck Institute for Human Cognitive and Brain Sciences, Leipzig, Germany

Edited by:

Claude Alain, Rotman Research Institute, Canada

Reviewed by:

Jochen Kaiser, Johann Wolfgang

Goethe University, Germany

Yi Du, Rotman Research Institute –

Baycrest Centre for Geriatric Care, Canada

*Correspondence:

Eline B. Petersen, Eriksholm Research Centre, Snekkersten, Denmark
e-mail: ebp@eriksholm.com

Degradations in external, acoustic stimulation have long been suspected to increase the load on working memory (WM). One neural signature of WM load is enhanced power of alpha oscillations (6–12 Hz). However, it is unknown to what extent common internal, auditory degradation, that is, hearing impairment, affects the neural mechanisms of WM when audibility has been ensured via amplification. Using an adapted auditory Sternberg paradigm, we varied the orthogonal factors memory load and background noise level, while the electroencephalogram was recorded. In each trial, participants were presented with 2, 4, or 6 spoken digits embedded in one of three different levels of background noise. After a stimulus-free delay interval, participants indicated whether a probe digit had appeared in the sequence of digits. Participants were healthy older adults (62–86 years), with normal to moderately impaired hearing. Importantly, the background noise levels were individually adjusted and participants were wearing hearing aids to equalize audibility across participants. Irrespective of hearing loss (HL), behavioral performance improved with lower memory load and also with lower levels of background noise. Interestingly, the alpha power in the stimulus-free delay interval was dependent on the interplay between task demands (memory load and noise level) and HL; while alpha power increased with HL during low and intermediate levels of memory load and background noise, it dropped for participants with the relatively most severe HL under the highest memory load and background noise level. These findings suggest that adaptive neural mechanisms for coping with adverse listening conditions break down for higher degrees of HL, even when adequate hearing aid amplification is in place.

Keywords: alpha oscillations, hearing loss, hearing aid, cognition, working memory

INTRODUCTION

Adverse listening conditions are common in everyday life. Auditory distractions and signal degradations increase demands on attention and working memory (WM; Shinn-Cunningham and Best, 2008). WM describes the system for temporary storage and processing of information to perform a cognitive task (Baddeley, 1986). Any degradation of the sensory auditory input requires increased WM involvement to successfully interpret the stimuli (Rönnerberg et al., 2008; Stenfelt and Rönnerberg, 2009). Auditory stimuli can be degraded by external factors, often occurring in the form of background noise, in which case WM is engaged to extract useful information from the auditory input (Pichora-Fuller, 2003). However, auditory processing can also be disrupted by internal degradation, such as sensorineural hearing loss (HL). To alleviate this internal degradation of the auditory input, people suffering from HL are typically treated with hearing aids. The purpose of a hearing aid is to amplify the auditory input to make sounds audible and consequently reduce the internal auditory degradation, which theoretically should release WM resources (sometimes referred to as lowered cognitive load; Lunner, 2003). Here, we

tested whether HL affects brain signatures of WM involvement in an adverse listening paradigm.

The power of neural oscillations in the alpha frequency band (liberally defined as 6–12 Hz) has been found to increase with WM load (Jensen et al., 2002). According to the functional inhibition framework (Klimesch et al., 2007; Jensen and Mazaheri, 2010), alpha oscillations indicate the inhibition of currently task-irrelevant brain regions and/or cognitive processes to prevent interference with task-relevant cognitive processing (Bonfond and Jensen, 2012). Although alpha power modulations have been found for external degradation of auditory signals (van Dijk et al., 2010; Obleser and Weisz, 2012; Obleser et al., 2012; Becker et al., 2013; Scharinger et al., 2014; Wöstmann et al., 2015), it is currently unknown how the internal degradation of auditory input through HL affects neural alpha dynamics (Strauß et al., 2014). There is good evidence from behavioral studies that HL negatively affects cognitive operations on the speech signal (McCoy et al., 2005; Wingfield et al., 2005, 2006). These findings support the hypothesis put forward by Rabbitt (1991), stating that adverse listening conditions require the allocation of more cognitive resources, which

could otherwise be used for more task-relevant cognitive processing, such as storing information. Thus, external (acoustic), and internal (auditory) degradations are assumed to trigger a higher degree of WM involvement during the encoding of task-relevant stimuli, leaving fewer cognitive resources for the storage, and processing of information in the WM (Lunner et al., 2009; Van Engen and Peelle, 2014). Here, we tested whether HL impacts behavioral performance and neural mechanisms even when it is treated with individually fitted hearing aids.

A well-established experimental paradigm to test WM demands is the Sternberg paradigm (Sternberg, 1966). Participant's task is to encode and retain a number of items to compare them to a subsequent probe. Although the Sternberg paradigm was originally developed as a visual WM task, it has since been adapted to test auditory WM (e.g., Rojas et al., 2000; Leiberg et al., 2006). The test incorporates a short stimulus-free delay period between the encoding and the probe presentation, during which the participants are to retain the presented stimuli in memory. This stimulus-free delay period is of special interest in neuroimaging studies, because neural responses measured in this time period are thought to reflect WM processes independent of the sensory stimulation itself. During stimuli presentation, the processes of auditory encoding and memory storage are not easily separated, contrary to the delay period where there is no sensory input and the only task is to retain the stimuli in memory and restore inadequately encoded digits. A number of studies have found that increased memory load (i.e., increasing the number of items to be remembered) was associated with enhanced alpha power over central and parietal recording sites during the delay period (Jensen et al., 2002; Leiberg et al., 2006; Obleser et al., 2012). Critically, Obleser et al. (2012) recently found that alpha power in the delay period was not only enhanced with an increasing number of to-be-remembered items, but with the acoustic degradation of the items.

In the present study, a version of the Sternberg test modified by Obleser et al. (2012) was applied to investigate the effects of varying memory load and the level of background noise on alpha oscillations measured by electroencephalogram (EEG) recording. We tested older participants with varying degrees of HL. In line with prior studies, we expected decreased task performance with higher memory load and higher levels of background noise. We hypothesized that alpha power would increase with the severity of HL, suggesting that internal auditory degradations increase the load on neural WM mechanisms in speech processing. Furthermore, it was of interest whether such increased expenditure of cognitive resources would reach a limit and break down (i.e., reminiscent of the CRUNCH hypothesis put forward by Reuter-Lorenz and Cappell, 2008) in listeners with the most severe HL and/or under highest task demands (i.e., highest memory load and most severe background noise).

MATERIALS AND METHODS

PARTICIPANTS

Twenty-nine native Swedish speaking participants (16 females, age range: 62–86 years, mean age 72.2 years), recruited from the audiology clinic at the University Hospital of Linköping in Sweden, participated in this study. Participants were recruited

to show large inter-individual variability of auditory pure-tone thresholds. Participants were grouped according to their pure-tone average (PTA), across 0.5, 1, 2, 4, and 8 kHz into three groups of HL (no/mild/moderate HL). The hearing threshold at 8 kHz was included in the PTA since sensitivity loss at higher frequencies are known to accompany age-related HL (CHABA, 1988). Separate one-way ANOVAs showed no difference in age between groups ($p = 0.114$), but a significant difference in HL ($p < 0.001$), with Fisher's Least Significant Difference (LSD) *post hoc* analysis showing significant differences between the three groups (all $p < 0.001$). Participant information is shown in **Table 1** and **Figures 1C,D**.

Participants all gave informed consent and were given no financial compensation for their participation. The study was approved by the regional ethical review in Linköping, Sweden and conformed with the Helsinki Declaration of Ethical Principles for Medical Research Involving Human Subjects.

EXPERIMENTAL DESIGN

Speech materials

The stimuli consisted of the monosyllabic Swedish digits “0,” “1,” “2,” “3,” “5,” “6,” and “7,” spoken by a female talker and recorded in a soundproof booth at a sampling rate of 22.05 KHz. For a natural co-articulation, the digits were recorded as triplets. The triplets were adjusted to the same root-mean-square (RMS) level, and then the first digit was extracted without silent intervals before and after each waveform, resulting in an average digit duration of 677 ms (SD: 103 ms). The recordings were originally used for the Swedish digit triplets test (Drullman et al., 2005; Larsby et al., 2011).

The final audio files were generated by adding speech-shaped noise to the digits at the individualized SNR levels (see below). Due to the short duration of the spoken digits acceptable speech-shaped noise could not be generated based on the spectrum of the digits. The speech-shaped noise was instead taken from the Dantale II test, a standardized hearing in noise test (HINT; Wagener et al., 2003). Speech-shaped noise is random stationary broadband noise, with the same long-term average frequency spectrum as natural speech.

Stimulus presentation

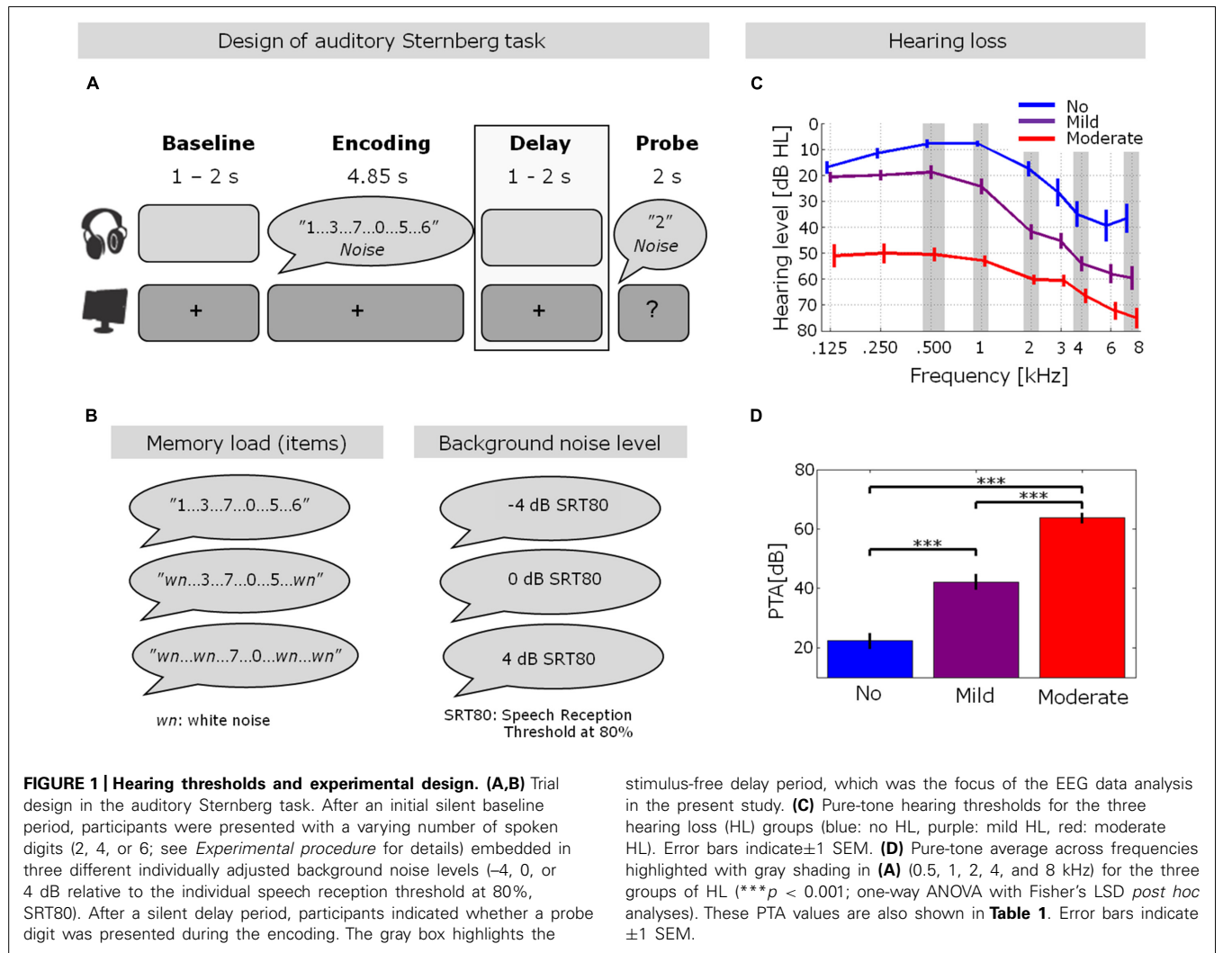
All participants were wearing Agil hearing aids (Oticon A/S, Smørum, Denmark) with individual quasi-linear amplification. The quasi-linear amplification accounts for the audibility of soft (inaudible speech) sounds by incorporating a fast-acting gain adjustment at the onset of the presented sounds and maintaining this gain throughout the presentation of the sounds with a very slow-acting gain adjustment (for details see Simonsen and Behrens, 2009). No changes were made to the time constant throughout the sound presentation, and the hearing aid amplification can be considered linear, meaning that the hearing aid output intensity increased at the same rate as the intensity of the acoustic input. The noise reduction algorithm and volume control normally available on these hearing aids were disabled during the entire experimental session.

All auditory stimuli were presented directly through the hearing aids using the Direct Audio Input (DAI). The experiment was conducted in an electrically shielded soundproof booth. Visual

Table 1 | Participant information.

	Hearing threshold range [dB HL]	Pure-tone average (PTA) [dB HL]	Age [years]	No. of females
No hearing loss (HL; $n = 8$)	0–25	22.3 (7.1)	68.8 (4.6)	4
Mild HL ($n = 11$)	25–50	42.1 (8.4)	72.5 (5.5)	7
Moderate HL ($n = 10$)	50–80	63.7 (5.2)	74.6 (6.4)	5
Total ($n = 29$)		44.1 (17.9)	72.2 (5.8)	16

Participants grouped according to their HL (no/mild/moderate HL; first column), defined based on three ranges of hearing thresholds (second column). Values in parentheses indicate one standard deviation. Average hearing threshold levels for the three groups across 0.5, 1, 2, 4, and 8 KHz are shown in the third column. Columns four and five list participants' mean age and number of females in the three groups, respectively. The bottom row shows average data across the entire sample of participants.



cues and instructions were presented on a 1280 by 1024 resolution screen, with the participants positioned 1 m from the screen.

Individual adjustments of SNR levels

To ensure equal intelligibility of the stimulus materials for all participants despite large inter-individual differences in hearing

thresholds (see **Figures 1C,D; Table 1**), the background noise levels were individually adjusted. To this end, participants listened to and repeated 40 spoken sentences from the Swedish version of the HINT (Hällgren et al., 2006). The output presentation level was 70 dB SPL, which was presented through the DAI of the hearing aids and amplified according to the individual audiograms.

In an adaptive tracking procedure (Levitt, 1971), we determined the background noise level (measured as the signal to noise ratio between speech and background noise) at which each participant was able to repeat 80% of the words in a sentence. This value for an individual participant will be referred to as the Speech Reception Threshold (SRT) of 80% (denoted 0 dB SRT80). In the Sternberg test, the individual 0 dB SRT80 level was used as the intermediate background noise level for the participant in question. The lower and higher background noise levels were generated by raising or lowering the SNR by 4 dB from the obtained 0 dB SRT80, denoted 4 dB SRT80 and -4 dB SRT80, respectively. To maintain a constant overall intensity level of the stimuli played from the presentation computer at ~70 dB SPL, both the level of the signal (i.e., the digits) and the level of the background noise were adjusted. For instance, for the 4 dB SRT80 condition, the noise level was lowered by 2 dB in intensity, and the signal level was raised by 2 dB relative to the 0 dB SRT80.

Experimental procedure

After the individual adjustment of SNR levels, the actual experiment was performed. An auditory version of the Sternberg paradigm (Sternberg, 1966), inspired by Obleser et al. (2012), was used, employing a 3×3 design of the orthogonal factors memory load (2, 4, or 6 digits to be remembered) and background noise level (4 dB, 0 dB, or -4 dB relative to the individual level at which 80% of the words were correctly recalled in noise). Each trial started with the presentation of a central fixation cross for 1–2 s (randomly varied duration), followed by the encoding phase, in which 2, 4, or 6 digits were presented in speech-shaped noise (Figures 1A,B). The noise onset always preceded the onset of the first digit by 50 ms to avoid masking of the first digit by the noise onset. In trials with two and four digits, flanking sounds of white noise, at the same intensity level as the spoken digits, were presented to always ensure the presentation of six sounds. The sounds (digits and flanking noises) were presented with an onset-to-onset stimulus interval of 0.8 s, resulting in a total encoding time of 4.85 s, after which the noise was also terminated.

The encoding was followed by a stimulus-free delay period, in which the participants were to retain the presented digits in their memory. The delay phase had a duration of 1–2 s (randomly varied). Lastly, a probe digit was presented in the same background noise level as during the encoding interval. Again, the noise started 50 ms prior to the probe digit. During this 50 ms interval, the fixation cross changed to a question mark, signaling that the participants were to indicate, via a button press on a response box, whether the probe digit appeared in the encoding phase (response window of 2 s). Participants were not instructed to use any particular finger(s) for pressing the response buttons, nor were the button positions varied between participants. If participants required more than 2 s to respond, they were instructed to be faster on the next trial and informed that no response was recorded. Feedback was given after each trial, consisting of either 'correct,' 'incorrect,' or 'no answer registered, please answer faster.' In half of the trials, the probe digit appeared during encoding.

Trials for the nine conditions in the 3 (memory load) \times 3 (background noise level) design were presented in 10 blocks. Due

to the length of the test, the 10 test blocks were separated into two recordings of five blocks. Each recording lasted ~45 min with a break of 15 min between the two recordings. Each recording was initiated with a training block of 11–25 trials from all nine conditions. Each test block consisted of a minimum of 18 trials with 2 trials for each condition, presented in a randomized order. The actual number of trials per block was determined by the number of unanswered trials. That is, for each trial in which no answer was registered due to a response time longer than 2 s, an extra trial was added to the block. Overall, 20 trials with registered answers were recorded in each condition for each participant.

EEG RECORDING AND PREPROCESSING

The EEG was recorded using an EGI system (Electrical Geodesic Inc., Eugene, OR, USA) with 128 Ag/Ag-Cl channels. Six occipital and one central electrode were disconnected from the electrode net and used for other physiological measurements which will not be reported here. The EEG was recorded at a sampling rate of 250 Hz using Cz as the reference. All electrode impedances were maintained below 50 kOhm. The EGI system incorporates analog elliptical high- and low-pass with cut-off frequencies at 0.1 and 125 Hz (the Nyquist frequency), respectively. Filtering was performed before analog-to-digital conversion of the EEG.

Offline, the EEG data were analyzed using customized MATLAB scripts (R2011b, MathWorks Inc.) and the Fieldtrip toolbox (Oostenveld et al., 2011). Trials with response times longer than 2 s were excluded from all further analyses. The data were divided into epochs of sufficient length (-5 to +11 s around the onset of the first digit/flanking noise) to avoid data loss at the edges of the time-frequency representations due to windowing effects. The epoched data were bandpass filtered using an acausal sixth order IIR Butterworth filter between 0.5 and 45 Hz and re-referenced to the average of both mastoids. Before further analyses, 18 electrodes used for recording the electrooculogram (EOG) or positioned on the cheeks and jaw were removed for technical reasons.

Individual channels containing artifacts were identified through visual inspection and repaired by averaging over adjacent electrodes (according to the nearest neighbor approach implemented in the *ft_channelrepair* function in Fieldtrip). Data from one participant from the mild HL group was excluded from all further analyses due to a high number of artifact-contaminated channels. To remove further artifacts, an independent component analysis (ICA) was performed, and components containing eye blinks, saccadic eye movements, muscle activity, and heartbeats were identified by inspection of components' topographies and time courses and rejected. On average, 22% (SD: 6%) of the components were removed.

The time-frequency representation of oscillatory power in each trial was obtained by convolution of single trial time domain data with a family of Morlet wavelets (width: seven cycles). This analysis was performed for frequencies from 0.5 to 30 Hz in steps of 0.5 Hz and from -5 to +11 s around the onset of the first digit/flanking noise in steps of 0.05 s. Note that this long time interval included the baseline period, encoding, delay, and probe (Figure 1A). The

power of each time–frequency–electrode bin was calculated for each trial by taking the square norm of the complex wavelet coefficients. Adjustment for inter- and intra-individual variability in oscillatory power was performed by means of subtraction and division by the average power of the first 0.4 to 1 s of the baseline interval (relative change from baseline). For further analyses, each trial was split into the following periods: encoding, 0.4–4.8 s relative to first digit/flanking noise onset; delay, 0.4–1 s relative to the offset of the last digit/flanking noise; and probe, 0.4–1 s relative to probe-digit onset. All intervals are outlined with white dashed boxes in **Figure 3A**. All time intervals disregard the first 0.4 s as to not include evoked activity after stimulus on- or offset in the analysis.

STATISTICAL ANALYSES

A main motivation of the present study was to investigate the effect of HL on behavioral performance and alpha oscillations in the auditory Sternberg task. However, HL was confounded by age, as evidenced by a positive Pearson’s correlation between age and PTA ($r = 0.44, p = 0.018$). To obtain a measure of HL that was independent of age, we calculated the residualized PTA, quantifying the variation in PTA across participants that could not be explained by age. In detail, the residualized PTA was estimated as the residuals of the linear regression of PTA on age. For the remainder of this paper, we will refer to the z-scored residualized PTA as ‘rPTA.’ In all further analyses, rPTA was included as a continuous covariate. Moreover, we considered it likely that brain compensatory mechanisms involved in overcoming the adverse listening conditions would not increase linearly with HL, but drop with more severe HL, especially under high memory load/background noise (see Introduction). To model this negative quadratic (inverted u-shape) relationship between HL and behavioral and brain responses, we additionally included the quadratic term rPTA-squared as a second continuous covariate in all further analyses.

Statistical analysis of behavioral data

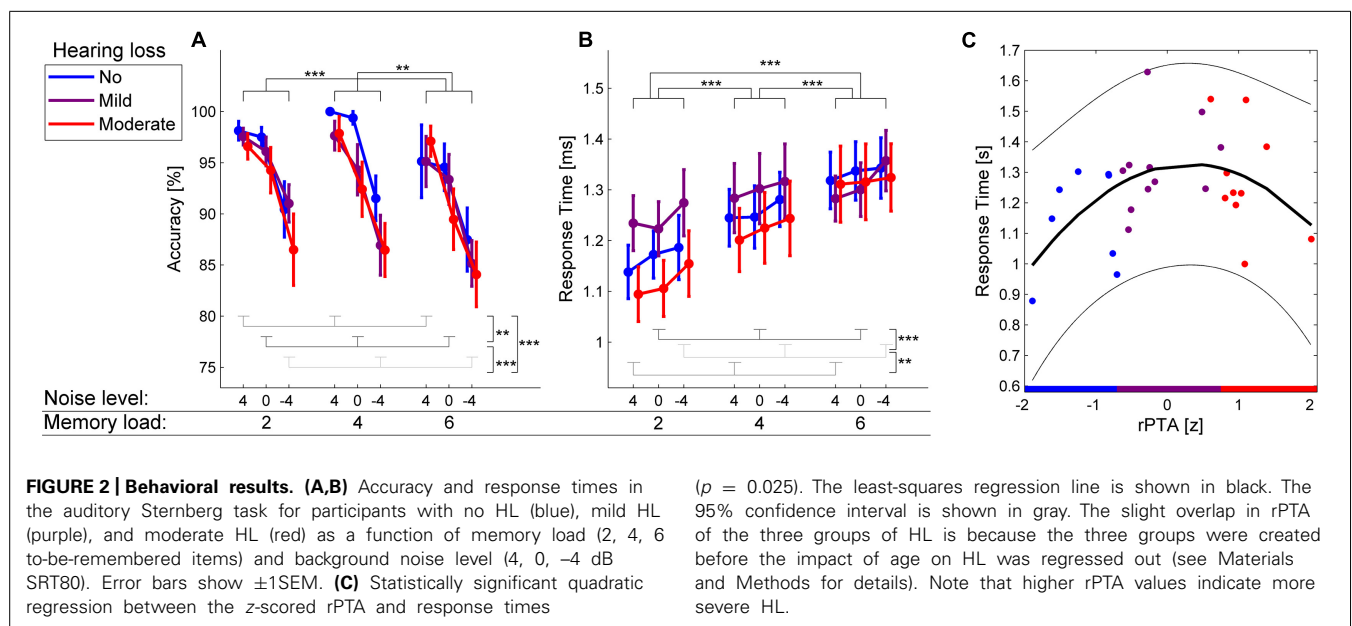
First, we analyzed to what extent the individual adjustments of SNR levels were dependent on participants’ HL. To evaluate whether individualization was needed, we calculated the Pearson’s correlation between the 0 dB SRT80 value from the HINT and the non-residualized PTA.

In the auditory Sternberg task, response times were measured from the onset of the probe digit until the button press by the participant to indicate whether the probe digit appeared in the encoding. Accuracy was calculated as the percentage of correctly answered trials. Changes in task accuracy and response times as a function of the within-subject factors (memory load and background noise level) and the continuous between-subjects covariates (rPTA and rPTA-squared), were investigated using two separate repeated-measures ANCOVAs. All ANCOVAs showed violation of the assumption of sphericity (Mauchly’s test, all $p < 0.05$), hence the Greenhouse–Geisser corrected p -values were calculated and reported for all results. Fisher’s LSD tests were used for all *post hoc* analyses.

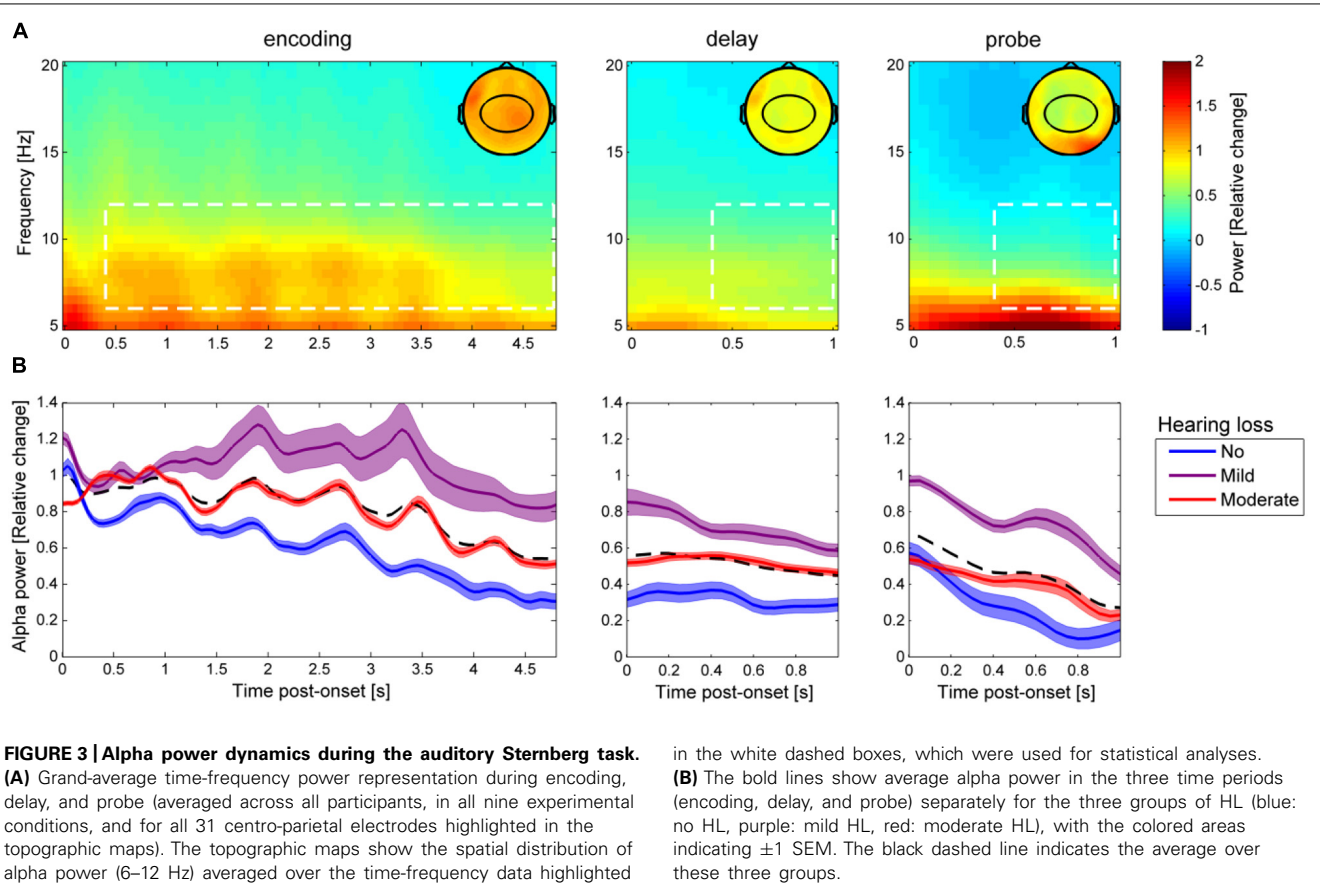
To illustrate the quadratic relationship between rPTA and response times (**Figure 2C**), a quadratic function was fitted to the response time as a function of rPTA using the least-squares approach implemented in the MATLAB functions *polyfit* and *polyval*.

Statistical analysis of EEG data

In the analysis of the EEG data, alpha power was averaged across frequencies from 6–12 Hz in a subset of 31 electrodes (**Figure 3A**, topographic maps) and across three time intervals outlined in **Figure 3A**: encoding, 0.4–4.8 s relative to the onset of the first digit/flanking noise; delay, 0.4–1 s relative to the offset of the last digit/flanking noise; and probe, 0.4–1 s relative to the onset of the probe digit. The 31 electrodes were chosen to derive a centro-parietal scalp distribution, which has previously been identified as an important site for alpha activity generation



($p = 0.025$). The least-squares regression line is shown in black. The 95% confidence interval is shown in gray. The slight overlap in rPTA of the three groups of HL is because the three groups were created before the impact of age on HL was regressed out (see Materials and Methods for details). Note that higher rPTA values indicate more severe HL.



during auditory processing (Krause et al., 1996). Average alpha power during encoding, delay and probe were subjected to three repeated-measures ANCOVAs with memory load and background noise level as within-subject factors and with rPTA and rPTA-squared as continuous between-subject covariates. All ANCOVAs showed violation of the assumption of sphericity (Mauchly's test, all $p < 0.05$), hence the Greenhouse–Geisser corrected p -values were calculated and reported for all results. All statistical analyses were performed using Statistica (version 12, StatSoft, Tulsa, OK, USA).

To illustrate the quadratic relationship between rPTA and alpha power (Figure 4B), the fitting procedure described in the section above was applied.

Studies have previously shown an interaction between response time and alpha activity (Klimesch, 2005). Relations between alpha activity during the probe period and response time were therefore evaluated using Pearson's correlation.

RESULTS

INDIVIDUAL ADJUSTMENTS OF SNR LEVELS

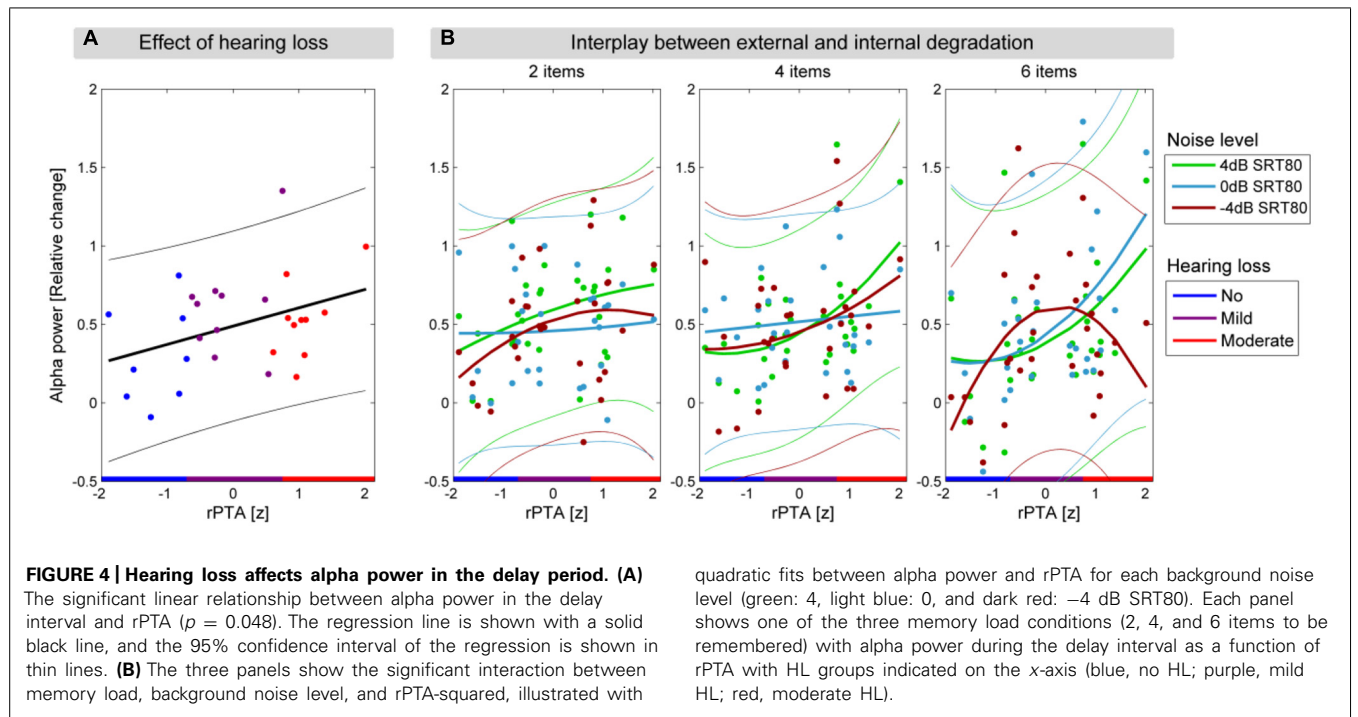
The individual adjustments of SNR levels using the SRT80 measure resulted in an average 0 dB SRT80 value of 4.61 dB [standard error of the mean (SEM) = 0.86], meaning that participants on average required an SNR level of 4.61 dB to successfully repeat 80% of words from sentences presented in noise. The 0 dB SRT80 values correlated positively with participants' non-residualized PTA

($r = 0.76$; $p < 0.001$). This indicates that participants with more severe HL required a higher SNR level of stimulus materials.

MEMORY LOAD, BACKGROUND NOISE LEVEL, AND HEARING LOSS IMPACT PERFORMANCE

Figure 2A shows the average accuracy for the three levels of memory load (2, 4, 6 digits) and the three background noise levels (−4 dB SRT80, 0 dB SRT80, 4 dB SRT80) in the auditory Sternberg task. The main effect of memory load on accuracy was significant [$F(2,50) = 6.26$, $p = 0.005$]. *Post hoc* tests revealed significantly increased accuracy for two compared with six items ($p < 0.001$) and for four compared with six items ($p = 0.002$) but not for two compared with four items ($p = 0.718$). Additionally, the main effect of background noise level on accuracy was significant [$F(2,50) = 28.35$, $p < 0.001$], with the *post hoc* analysis showing a significant decrease in accuracy with increasing noise level (all $p < 0.01$). There were no significant main effects of rPTA [$F(1,25) = 1.86$, $p = 0.185$] or rPTA-squared [$F(1,25) = 1.94$, $p = 0.176$], indicating that the degree of HL by itself did not significantly impact task accuracy. None of the interactions between background noise level, memory load, rPTA, and rPTA-squared were significant (all $p > 0.195$).

Figure 2B shows the average response times for the three memory loads and background noise levels. The main effect of memory load on response times was significant [$F(2,50) = 24.73$, $p < 0.001$]. *Post hoc* tests revealed significantly longer response



times for six compared with four and two to-be-retained digits, as well as for four compared with two digits (all $p < 0.001$). The main effect of background noise on response times was significant as well [$F(2,50) = 8.34, p = 0.001$]. *Post hoc* tests revealed significantly longer response times for the highest background noise level (-4 dB SRT80) compared with the intermediate noise level (0 dB SRT80; $p < 0.001$) and the lowest background noise level (4 dB SRT80; $p = 0.003$). Response times in the four and 0 dB SRT80 conditions did not differ significantly ($p = 0.328$). Interestingly, the main effect of rPTA-squared on response times was significant [$F(1,25) = 5.69, p = 0.025$]. This indicated a significant quadratic relationship between response times and the degree of HL in such a way that response times increased from no to mild HL, while response times decreased again for participants with the most severe HL (see **Figure 2C**). Neither the main effect of rPTA [$F(1,25) = 1.85, p = 0.185$], nor any interaction between memory load, background noise, rPTA, and rPTA-squared (all $p \geq 0.13$) reached significance.

TEMPORAL DYNAMICS OF ALPHA OSCILLATIONS

Figure 3A shows the grand-average baseline corrected time-frequency power representation (collapsed over all nine experimental conditions) for all participants throughout the encoding, delay, and probe periods of the auditory Sternberg. The time course of alpha power (6–12 Hz; averaged over 31 scalp electrodes highlighted in topographic maps) for the three groups of HL are indicated in **Figure 3B**. Descriptively, alpha power decreased over the trial time course from encoding to delay and also during the probe interval. Normal hearing participants (no HL) exhibited the lowest alpha power in encoding, delay and probe, while the mild HL group showed the highest and the moderate HL group exhibited intermediate alpha power.

Hearing loss affects alpha oscillations under load

We analyzed whether alpha power during the stimulus-free delay interval was dependent on memory load, background noise level, and HL. To this end, the average alpha power (6–12 Hz) across 31 centro-parietal electrodes during the delay interval (0.4–1 s relative to the offset of the background noise) was submitted to a repeated-measures ANCOVA with the factors memory load and background noise level and the continuous covariates rPTA and rPTA-squared. None of the main effects including background noise level [$F(2,50) = 1.23, p = 0.299$], memory load [$F(2,50) = 0.04, p = 0.598$], or rPTA-squared [$F(1,25) < 0.01, p = 0.989$] were significant. Importantly, however, the main effect rPTA was significant [$F(1,25) = 4.31, p = 0.0483$], indicating that alpha power during the delay increased significantly with the degree of HL (**Figure 4A**).

Moreover, the two-way interaction background noise level \times rPTA-squared [$F(2,50) = 6.34, p = 0.004$] as well as the three-way interaction background noise level \times rPTA-squared \times memory load were significant [$F(4,100) = 2.86, p = 0.042$]. The direction of the significant three-way interaction is illustrated in **Figure 4B**. For the two lower memory loads (two and four to-be-remembered items), alpha power during the delay period increased moderately with the degree of HL for all background noise levels. This pattern of results changed significantly under the highest memory load (six to-be-remembered digits); here, alpha power strongly increased with HL under the two more favorable background noise levels (4 and 0 dB SRT80), but under the most severe background noise level (-4 dB SRT80), alpha power increased only for participants with mild HL, whereas it decreased again for participants with moderate HL. The significant interaction between background noise level and rPTA ($p = 0.004$) is not shown, but resembles the same behavior

799 as observed for six items to be remembered shown in **Figure 4B**.
800 None of the remaining interactions among rPTA, rPTA-squared,
801 memory load, and background noise level were significant (all
802 $p > 0.15$).

803 Solid lines indicate quadratic fits, while thin lines indicate the
804 corresponding 95% confidence interval bounds. Note that higher
805 rPTA values indicate more severe HL.

806 The main hypothesis of this experiment was focused on iden-
807 tifying condition and HL effects on alpha power during the delay.
808 However, as Obleser et al. (2012) also report smaller condition
809 effects during the encoding and probe period. We therefore inves-
810 tigated alpha power during the encoding (0.4–4.8 s relative to the
811 onset of the first digit/flanking noise) and probe (0.4–1 s relative to
812 probe digit onset) interval as well. For the encoding interval, none
813 of the main effects of memory load, background noise level, rPTA,
814 and rPTA-squared, nor any interactions reached significance (all
815 $p > 0.14$). During the presentation of the probe, a main effect of
816 rPTA-squared was found [$F(1,25) = 9.63, p = 0.004$], while no
817 other main effects or interactions were significant (all $p > 0.120$).
818 Notably, an effect of rPTA-squared is also observed on the response
819 time and the relationship between alpha activity during the probe,
820 and the response time was investigated. A Pearson's correlation
821 showed a positive relationship ($r = 0.35, p = 0.068$) between alpha
822 power during the probe and response times, meaning that partic-
823 ipants with higher alpha power during the probe interval showed
824 longer response times. A similar relationship was not observed
825 between the alpha power during the delay period and the response
826 times ($r = 0.15, p = 0.42$).

827 DISCUSSION

829 In this study, we tested whether HL in older participants had
830 an impact on the neural mechanisms of WM under changing
831 task demands implemented by varying degrees of memory load
832 and background noise. Our main findings can be summarized
833 as follows: first, irrespective of HL, increasing memory load and
834 higher background noise levels led to performance decrements
835 in the auditory Sternberg paradigm. Second, the effects of the
836 increasing memory load and background noise level on alpha
837 activity during the delay were co-determined by the degree of
838 HL. That is, participants suffering from a higher degree of HL
839 exhibited a breakdown in alpha activity with increasing task dif-
840 ficulty, which was not observed for the participants with mild or
841 no HL. These findings show how an internal auditory degrada-
842 tion (i.e., HL) interacts with external acoustic challenges during
843 adverse listening.

845 THE EFFECT OF RETAINING AUDITORY STIMULI

846 Effects of WM processing on alpha power have been often observed
847 only during the retention of stimuli in both auditory (van Dijk
848 et al., 2010; Obleser and Weisz, 2012; Obleser et al., 2012; Becker
849 et al., 2013; Scharinger et al., 2014) and visual tasks (Jensen et al.,
850 2002; Schack and Klimesch, 2002; Sander et al., 2012b). It was
851 therefore not unexpected that modulations of alpha power in this
852 study were also found in the delay period.

853 The linear main effect of rPTA on alpha power in the delay
854 period (**Figure 4A**) showed that alpha power increases with more
855 severe HL, independent of task difficulty. This linear effect occurs

856 despite the quadratic tendency seen in **Figure 3B**. The linear rela-
857 tionship in **Figure 4A** arose from large individual differences in
858 alpha power, especially in the mildly impaired group, and was also
859 affected by the residualization performed to remove age effects:
860 first, this dependence of alpha power on HL is observed during
861 the retention of the to-be-remembered digits, where no active
862 listening is involved. Second, all participants were wearing hear-
863 ing aids to equalize audibility of the digits presented during the
864 encoding across participants. Interpreting the alpha activity as a
865 sign of WM involvement (Jensen et al., 2002), our study shows that
866 a higher degree of WM involvement is needed to overcome more
867 severe HL to successfully retain the auditory information. This
868 view of increased WM involvement with increased HL has been
869 put forward in a number of studies (Pichora-Fuller and Singh,
870 2006; Rönnberg et al., 2008; Shinn-Cunningham and Best, 2008).
871 The Ease of Language Understanding (ELU) model developed
872 by Rönnberg et al. (2008) explains the involvement of the WM
873 in speech understanding under adverse conditions. In detail, the
874 ELU model builds on the ability to match auditory stimuli with
875 a preexisting long-term memory store of phonological represen-
876 tations. When suffering from a HL, this match cannot readily be
877 made due to the internal degradation. Hence WM processes are
878 required for extracting acoustical cues that can trigger a phono-
879 logical match and ensure a successful understanding. In line with
880 the ELU model, the linear relationship between HL and alpha
881 power can be interpreted as the increased WM resources needed
882 to perform successful phonological matching in listeners with HL.
883 Interestingly, the effect of HL on alpha activity is observed for par-
884 ticipants wearing hearing aids, which is thought to ensure equal
885 audibility, but arguably cannot restore the WM resources needed
886 to retain speech stimuli.

887 Hearing aids can indeed ensure audibility and restore intelli-
888 gibility in quiet situations, while other aspects of listening, such
889 as processing of temporal cues, are not alleviated by amplifica-
890 tion (Ardoint et al., 2010). Furthermore, speech intelligibility in
891 noisy situations also remains affected by HL and cannot be fully
892 restored by amplification (Plomp, 1978; Dillon, 2001). This is
893 indeed evident from the positive relationship between HL and the
894 0 dB SRT80 value. Peelle et al. (2011) found that increased HL
895 was correlated with decreased gray matter volume of the auditory
896 cortex, i.e., a structural change in the brain. If HL causes structural
897 changes in the auditory cortex, this might explain why individual
898 HL compensation via amplification does not nullify such struc-
899 tural deviation in the auditory system, and HL-dependent effects,
900 such as the present ones, are observed despite hearing aids being
901 employed.

902 The impact of the experimental conditions (memory load and
903 background noise level) proved only to be significant in inter-
904 actions with HL. Our results showed that when increasing the
905 external degradation, i.e., the background noise level, an increase
906 in alpha activity with HL was observed for the lower levels of
907 background noise. However, for the highest background noise
908 level, a breakdown in alpha activity was observed for the partic-
909 ipants with the most severe degree of HL tested in this study
910 (moderate HL). This breakdown in alpha power is only observed
911 when participants have to remember six digits in the most diffi-
912 cult noise condition (**Figure 4B**). The almost linear increase in

913 alpha power with HL severity observed at lower background noise
914 levels (4 and 0 dB SRT80) suggests that although the noise levels
915 are individualized, participants with increased HL require addi-
916 tional WM resources to be able to perform the task. Indeed, it
917 has previously been suggested that people suffering from HL need
918 to allocate additional resources to process auditory information
919 (Rabbitt, 1991). The findings in this study lend neural support to
920 this hypothesis.

921 The breakdown in alpha power with increased HL and back-
922 ground noise level further suggests that the participants suffering
923 from reduced hearing reach a ceiling at which no further enhance-
924 ment in alpha activity can be achieved, and alpha power begins to
925 decrease. Such alpha power breakdown has been observed before
926 when older participants, not considering HL, are subjected to a
927 higher WM load in a visual Sternberg task, while no effect of
928 age was observed on task accuracy (Sander et al., 2012b). Similar
929 findings of neural activity breakdown with high WM loads for
930 increasing age have been observed in fMRI studies (Reuter-Lorenz
931 and Cappell, 2008; Schneider-Garces et al., 2010; Grady, 2012).
932 Also here, the activity breakdown is not necessarily accompanied
933 by changes in task accuracy. According to the “compensation-
934 related utilization of neural circuits” (CRUNCH) hypothesis, the
935 brain increases its activation to engage more neural resources
936 as a result of aging, independent of WM involvement. How-
937 ever, with increasing WM demands, this recruitment reaches a
938 ceiling, and the activity decreases, although no changes in task
939 performance are observed (Reuter-Lorenz and Cappell, 2008).
940 We suggest that, similar to increasing age, more severe HL can
941 cause neural activity breakdown as a result of having to engage
942 more WM resources than participants with better hearing. It is
943 believed that the cause of the observed breakdown is a combina-
944 tion of the two observations that: participants with more severe
945 HL experience generally higher WM involvement (independent of
946 experimental conditions, **Figure 4A**) and during WM tasks they
947 have increased WM involvement (**Figure 4B**). To our knowledge
948 our results are the first to demonstrate a breakdown of neural
949 activity with increased HL.

950 Alpha power during the delay was affected by memory load in a
951 three-way interaction with background noise and rPTA-squared.
952 Our experimental design was modified from the auditory Stern-
953 berg task applied by Obleser et al. (2012), who found main effects
954 of both memory load and auditory degradation (obtained through
955 noise-vocoding of the digits) on alpha activity. The lack of a main
956 effect of memory load in the present study might be explained
957 best by the differences in participants (older hearing impaired
958 vs. younger normal hearing), rather than auditory degradation
959 (background noise vs. noise-vocoding). Both of these changes
960 were introduced to achieve some gain in external validity in the
961 present study.

962 Although we corrected for the difference in age between partic-
963 ipants in this study, we cannot account for the average differences
964 between younger and older persons, which has been proven to
965 affect both alpha activity and WM resources (Klimesch, 1999;
966 Sander et al., 2012a). Although increased age might have resulted
967 in participants having generally less WM resources available and
968 thereby reaching alpha power breakdown, differences in cohort
969 age between the studies cannot explain the non-significant main

effect of memory load in the present study. We suggest that the lack
of memory load effect can be explained by the fact that the hear-
ing impaired participants are already performing at the ceiling
and cannot further increase their alpha activity when subjected
to higher memory loads and/or background noise levels. This
statement is supported by two observations: firstly, that the alpha
power increased with HL, independent of the experimental con-
dition. Secondly, that the conditions effects (rPTA \times background
noise level and rPTA \times background noise level \times memory load)
showed a decrease in alpha power for the moderately impaired
participants, c.f. **Figure 4B**.

NO EFFECTS OF HEARING LOSS ON TASK ACCURACY

To adjust for the differences in HL, the background noise levels
were individualized using the SRT80 measure obtained from the
HINT test (for details see Materials and Methods). The positive
relation between rPTA and 0 dB SRT80 shows that for participants
with more severe HL a lower background noise level (i.e., higher
0 dB SRT80) is needed. This relationship emphasizes the impor-
tance of individualizing the background noise level to ensure equal
task accuracy across all participants, independent of HL. Indeed,
the non-significant effect of HL on task accuracy confirms the
success of applying individual noise levels.

As hypothesized, task accuracy significantly decreased both
with increased memory load and background noise level. As
Figure 2A shows, background noise levels showed stronger effects
on task accuracy than changes in the memory load. In line with the
modulations of alpha activity, this finding emphasizes that audi-
tory degradation induces a larger WM involvement than changes
in the memory load for the memory loads and background noise
level tested in this study. Significant effects of the experimen-
tal conditions on task accuracy have sometimes been reported
in auditory and visual Sternberg tasks (Rojas et al., 2000; Jensen
et al., 2002; Sander et al., 2012b), but most studies aim at having
no condition effects on accuracy (Sternberg, 1966; Lehtelä et al.,
1997; Leiberg et al., 2006; Obleser et al., 2012). As noted by Rojas
et al. (2000), the confounding effect of task accuracy on response
time and alpha activity makes it impossible to determine whether
WM processing is indeed involved in solving the task, especially
for wrongly answered trials. In this study, effects of memory load
and background noise level on task accuracy were found, which
is a limitation of the study. However, obtaining task accuracies
close to 100% correct for all conditions and participants would
require troublesome and time consuming individualization. Alter-
natively, including only the correctly answered trials in the current
analysis would result in an unfeasibly low number of trials per
condition. However, as we observe effects of HL on the alpha
power, we believe that WM processing was involved during task
solving.

The response times were affected both by the experimental
conditions (**Figure 2B**) and HL (**Figure 2C**), the latter show-
ing a speed-up in response times with increased HL. As a sign
of stimulus retrieval (Sternberg, 1966), it was expected that the
response time would show effects of the experimental condition
as well as HL. The increase in response times from normal to
mildly impaired hearing suggests that increasing internal degra-
dation of the auditory signal results in longer processing times of

1027 the probe digit. As HL increases from mild to moderate, the par-
1028 ticipants strategy might change resulting in shorter response times
1029 (Figure 2C).

1030 The effect of rPTA-squared on alpha activity during the probe
1031 also proved to be significant and although the correlation between
1032 the alpha activity during the probe and the response times only
1033 approached significance ($p = 0.068$), we believe that the changes
1034 in alpha power during the probe period arise from changes in the
1035 speed of information processing (Klimesch, 2005) and not WM
1036 processing as such.

1037 In summary, the present findings suggest that despite being
1038 compensated for the loss of hearing through hearing aid amplifi-
1039 cation and by individually setting the administered signal-to-noise
1040 ratios, higher degrees of HL are detrimentally affecting a cardi-
1041 nal neural mechanism of overcoming adverse listening conditions,
1042 namely the increase in posterior alpha power. Apparently, partic-
1043 ipants with moderate HL reach a ceiling level at which no more
1044 WM resources can be recruited, and thus alpha power begins to
1045 decrease again. These findings not only reveal that hearing aid
1046 amplification by itself is not sufficient for restoring normal neural
1047 signatures of auditory processing, but also suggest that persons
1048 suffering from a higher degree of HL reach a WM limit at a lower
1049 task demand.

1050

1051 ACKNOWLEDGMENTS

1052 EBP is supported by a grant from the Oticon Foundation. We
1053 wish to thank all the participants in the experiment and Gunilla
1054 Wänström, Irene Slättengren, and Mathias Hällgren for their assis-
1055 tance during the experiment. The authors are grateful for the
1056 helpful discussions with researchers at Eriksholm Research Cen-
1057 tre and members of the Max Planck Research Group “Auditory
1058 Cognition.”

1059

1060 REFERENCES

- 1061 Ardoint, M., Sheft, S., Fleuriot, P., Garnier, S., and Lorenzi, C. (2010). Percep-
1062 tion of temporal fine-structure cues in speech with minimal envelope cues for
1063 listeners with mild-to-moderate hearing loss. *Int. J. Audiol.* 49, 823–831. doi:
10.3109/14992027.2010.492402
- 1064 Baddeley, A. (1986). *Working Memory*. Oxford: Oxford University Press.
- 1065 Becker, R., Pefkou, M., Michel, C. M., and Hervais-Adelman, A. G. (2013). Left tem-
1066 poral alpha-band activity reflects single word intelligibility. *Front. Syst. Neurosci.*
7:121. doi: 10.3389/fnsys.2013.00121
- 1067 Bonnefond, M., and Jensen, O. (2012). Alpha oscillations serve to protect working
1068 memory maintenance against anticipated distracters. *Curr. Biol.* 22, 1969–1974.
1069 doi: 10.1016/j.cub.2012.08.029
- 1070 CHABA. (1988). Speech understanding and aging. *J. Acoust. Soc. Am.* 83, 859–895.
1071 doi: 10.1121/1.395965
- 1072 Dillon, H. (2001). Hearing aids. *Gac. Med. Mex.* 126, 417–418. doi:
10.1007/SpringerReference_115704
- 1073 Drullman, R., Wagener, K., Wouters, J., and Eneman, K. (2005). Speech recognition
1074 tests for different languages. *Hear. Commun. Soc.*
- 1075 Grady, C. (2012). The cognitive neuroscience of ageing. *Nat. Rev. Neurosci.* 13,
1076 491–505. doi: 10.1038/nrn3256
- 1077 Hällgren, M., Larsby, B., and Arlinger, S. (2006). A swedish version of the Hearing
1078 In Noise Test (HINT) for measurement of speech recognition. *Int. J. Audiol.* 45,
227–37. doi: 10.1080/14992020500429583
- 1079 Jensen, O., Gelfand, J., Kounios, J., and Lisman, J. E. (2002). Oscillations in the alpha
1080 band (9–12 Hz) increase with memory load during retention in a short-term
1081 memory task. *Cereb. Cortex* 12, 877–882. doi: 10.1093/cercor/12.8.877
- 1082 Jensen, O., and Mazaheri, A. (2010). Shaping functional architecture by oscil-
1083 latory alpha activity: gating by inhibition. *Front. Hum. Neurosci.* 4:186. doi:
10.3389/fnhum.2010.00186

- Klimesch, W. (1999). EEG alpha and theta oscillations reflect cognitive and memory
1084 performance: a review and analysis. *Brain Res. Brain Res. Rev.* 29, 169–95. doi:
10.1016/S0165-0173(98)00056-3
1085
- Klimesch, W. (2005). “EEG Alpha and Cognitive Processes,” in *Time and the Brain*,
1086 ed. R. Miller (Amsterdam: Harwood Academic Publishers), 236–261.
1087
- Klimesch, W., Sauseng, P., and Hanslmayr, S. (2007). EEG alpha oscilla-
1088 tions: the inhibition-timing hypothesis. *Brain Res. Rev.* 53, 63–88. doi:
10.1016/j.brainresrev.2006.06.003
1089
- Krause, C. M., Lang, A. H., Laine, M., Kuusisto, M., and Pörn, B. (1996). Event-
1090 related EEG desynchronization and synchronization during an auditory memory
1091 task. *Electroencephalogr. Clin. Neurophysiol.* 98, 319–326. doi: 10.1016/0013-
1092 4694(96)00283-0
1093
- Larsby, B., Hällgren, M., and Leandersson, M. (2011). “The swedish digit triplet
1094 test for screening of hearing by telephone and internet,” in *Proceedings of the*
1095 *First International Conference on Cognitive Hearing Science for communication*,
1096 Linköping.
- Lehtelä, L., Salmelin, R., and Hari, R. (1997). Evidence for reactive magnetic 10-
1097 Hz rhythm in the human auditory cortex. *Neurosci. Lett.* 222, 111–114. doi:
10.1016/S0304-3940(97)13361-4
1098
- Leiberg, S., Lutzenberger, W., and Kaiser, J. (2006). Effects of memory load on
1099 cortical oscillatory activity during auditory pattern working memory. *Brain Res.*
1100 1120, 131–140. doi: 10.1016/j.brainres.2006.08.066
- Lunner, T. (2003). Cognitive function in relation to hearing aid use. *Int. J. Audiol.*
1101 42, S49–S58. doi: 10.3109/14992020309074624
- Lunner, T., Rudner, M., and Rönnerberg, J. (2009). Cognition and hearing aids. *Scand.*
1102 *J. Psychol.* 50, 395–403. doi: 10.1111/j.1467-9450.2009.00742.x
- McCoy, S. L., Tun, P. A., Cox, L. C., Colangelo, M., Stewart, R. a., and
1103 Wingfield, A. (2005). Hearing loss and perceptual effort: downstream effects
1104 on older adults’ memory for speech. *Q. J. Exp. Psychol. A.* 58, 22–33. doi:
10.1080/02724980443000151
1105
- Obleser, J., and Weisz, N. (2012). Suppressed alpha oscillations predict intel-
1106 ligibility of speech and its acoustic details. *Cereb. Cortex* 22, 2466–77. doi:
10.1093/cercor/bhr325
1107
- Obleser, J., Wostmann, M., Hellbernd, N., Wilsch, A., and Maess, B. (2012).
1108 Adverse listening conditions and memory load drive a common alpha oscilla-
1109 tory network. *J. Neurosci.* 32, 12376–12383. doi: 10.1523/JNEUROSCI.4908-
1110 11.2012
1111
- Oostenveld, R., Fries, P., Maris, E., and Schoffelen, J.-M. (2011). FieldTrip:
1112 open source software for advanced analysis of MEG, EEG, and invasive elec-
1113 trophysiological data. *Comput. Intell. Neurosci.* 2011, 156869. doi: 10.1155/2011/
1114 156869
1115
- Pichora-Fuller, M. K. (2003). Cognitive aging and auditory information processing.
1116 *Int. J. Audiol.* 42(Suppl. 2), 2S26–2S32.
1117
- Pichora-Fuller, M. K., and Singh, G. (2006). Effects of age on auditory and cognitive
1118 processing: implications for hearing aid fitting and audiologic rehabilitation.
1119 *Trends Amplif.* 10, 29–59. doi: 10.1177/108471380601000103
1120
- Plomp, R. (1978). Auditory handicap of hearing impairment and the limited benefit
1121 of hearing aids. *J. Acoust. Soc. Am.* 63, 533–549. doi: 10.1121/1.381753
1122
- Rabbitt, P. (1991). Mild hearing loss can cause apparent memory failures which
1123 increase with age and reduce with IQ. *Acta Otolaryngol. Suppl.* 476, 167–176. doi:
10.3109/00016489109127274
1124
- Reuter-Lorenz, P. A., and Cappell, K. A. (2008). Neurocognitive aging and
1125 the compensation hypothesis. *Curr. Dir. Psychol. Sci.* 17, 177–182. doi:
10.1111/j.1467-8721.2008.00570.x
1126
- Rojas, D. C., Teale, P. D., Sheeder, J. L., and Reite, M. L. (2000). Neuromagnetic
1127 alpha suppression during an auditory sternberg task. Evidence for a serial, self-
1128 terminating search of short-term memory. *Brain Res. Cogn. Brain Res.* 10, 85–9.
1129 doi: 10.1016/S0926-6410(00)00026-4
1130
- Rönnerberg, J., Rudner, M., Foo, C., and Lunner, T. (2008). Cognition counts: a
1131 working memory system for ease of language understanding (ELU). *Int. J. Audiol.*
47(Suppl. 2), S99–S105. doi: 10.1080/14992020802301167
1132
- Sander, M. C., Lindenberger, U., and Werkle-Bergner, M. (2012a). Lifespan age dif-
1133 ferences in working memory: a two-component framework. *Neurosci. Biobehav.*
1134 *Rev.* 36, 2007–2033. doi: 10.1016/j.neubiorev.2012.06.004
1135
- Sander, M. C., Werkle-Bergner, M., and Lindenberger, U. (2012b). Amplitude mod-
1136 ulations and inter-trial phase stability of alpha-oscillations differentially reflect
1137 working memory constraints across the lifespan. *Neuroimage* 59, 646–54. doi:
10.1016/j.neuroimage.2011.06.092
1138
1139
1140

- 1141 Schack, B., and Klimesch, W. (2002). Frequency characteristics of evoked and oscil- 1198
 1142 latory electroencephalic activity in a human memory scanning task. *Neurosci.* 1199
 1143 *Lett.* 331, 107–110. doi: 10.1016/S0304-3940(02)00846-7 1200
- 1144 Scharinger, M., Herrmann, B., Nierhaus, T., and Obleser, J. (2014). Simultaneous 1201
 1145 EEG-fMRI brain signatures of auditory cue utilization. *Front. Neurosci.* 8:137. 1202
 doi: 10.3389/fnins.2014.00137 1203
- 1146 Schneider-Garces, N. J., Gordon, B. a., Brumback-Peltz, C. R., Shin, E., Lee, Y., Sut- 1204
 1147 ton, B. P., et al. (2010). Span, CRUNCH, and beyond: working memory capacity 1205
 1148 and the aging brain. *J. Cogn. Neurosci.* 22, 655–669. doi: 10.1162/jocn.2009.21230 1206
 1149 Shinn-Cunningham, B. G., and Best, V. (2008). Selective attention in normal 1207
 1150 and impaired hearing. *Trends Amplif.* 12, 283–299. doi: 10.1177/1084713808 1208
 325306 1209
- 1151 Simonsen, C. S., and Behrens, T. (2009). A new compression strategy based on a 1210
 1152 guided level estimator. *Hear. Rev.* 16, 26–31. 1211
- 1153 Stenfelt, S., and Rönnberg, J. (2009). The signal-cognition interface: interactions 1212
 1154 between degraded auditory signals and cognitive processes. *Scand. J. Psychol.* 50, 1213
 1155 385–393. doi: 10.1111/j.1467-9450.2009.00748.x 1214
- 1156 Sternberg, S. (1966). High-speed scanning in human memory. *Science* 153, 652–654. 1215
 1157 doi: 10.1126/science.153.3736.652 1216
- 1158 Strauß, A., Wöstmann, M., and Obleser, J. (2014). Cortical alpha oscillations 1217
 1159 as a tool for auditory selective inhibition. *Front. Hum. Neurosci.* 8:350. doi: 1218
 10.3389/fnhum.2014.00350 1219
- 1160 van Dijk, H., Nieuwenhuis, I. L. C., and Jensen, O. (2010). Left temporal alpha band 1220
 1161 activity increases during working memory retention of pitches. *Eur. J. Neurosci.* 31, 1701–7. doi: 1221
 10.1111/j.1460-9568.2010.07227.x 1222
- 1162 Van Engen, K. J., and Peelle, J. E. (2014). Listening effort and accented speech. *Front.* 1223
 1163 *Hum. Neurosci.* 8:577. doi: 10.3389/fnhum.2014.00577 1224
- 1164 Wagener, K., Josvassen, J. L., and Ardenkjær, R. (2003). Design, optimization and 1225
 1165 evaluation of a Danish sentence test in noise. *Int. J. Audiol.* 42, 10–17. doi: 1226
 10.3109/14992020309056080 1227
- 1166 1228
- 1167 1229
- 1168 1230
- 1169 1231
- 1170 1232
- 1171 1233
- 1172 1234
- 1173 1235
- 1174 1236
- 1175 1237
- 1176 1238
- 1177 1239
- 1178 1240
- 1179 1241
- 1180 1242
- 1181 1243
- 1182 1244
- 1183 1245
- 1184 1246
- 1185 1247
- 1186 1248
- 1187 1249
- 1188 1250
- 1189 1251
- 1190 1252
- 1191 1253
- 1192 1254
- 1193 1255
- 1194 1256
- 1195 1257
- 1196 1258
- 1197 1259
- 1198 1260
- 1199 1261
- 1200 1262
- 1201 1263
- 1202 1264
- 1203 1265
- 1204 1266
- 1205 1267
- 1206 1268
- 1207 1269
- 1208 1270
- 1209 1271
- 1210 1272
- 1211 1273
- 1212 1274
- 1213 1275
- 1214 1276
- 1215 1277
- 1216 1278
- 1217 1279
- 1218 1280
- 1219 1281
- 1220 1282
- 1221 1283
- 1222 1284
- 1223 1285
- 1224 1286
- 1225 1287
- 1226 1288
- 1227 1289
- 1228 1290
- 1229 1291
- 1230 1292
- 1231 1293
- 1232 1294
- 1233 1295
- 1234 1296
- 1235 1297
- 1236 1298
- 1237 1299
- 1238 1300
- 1239 1301
- 1240 1302
- 1241 1303
- 1242 1304
- 1243 1305
- 1244 1306
- 1245 1307
- 1246 1308
- 1247 1309
- 1248 1310
- 1249 1311
- 1250 1312
- 1251 1313
- 1252 1314
- 1253 1315
- 1254 1316
- 1255 1317
- 1256 1318
- 1257 1319
- 1258 1320
- 1259 1321
- 1260 1322
- 1261 1323
- 1262 1324
- 1263 1325
- 1264 1326
- 1265 1327
- 1266 1328
- 1267 1329
- 1268 1330
- 1269 1331
- 1270 1332
- 1271 1333
- 1272 1334
- 1273 1335
- 1274 1336
- 1275 1337
- 1276 1338
- 1277 1339
- 1278 1340
- 1279 1341
- 1280 1342
- 1281 1343
- 1282 1344
- 1283 1345
- 1284 1346
- 1285 1347
- 1286 1348
- 1287 1349
- 1288 1350
- 1289 1351
- 1290 1352
- 1291 1353
- 1292 1354
- 1293 1355
- 1294 1356
- 1295 1357
- 1296 1358
- 1297 1359
- 1298 1360
- 1299 1361
- 1300 1362